

MONET OAKS

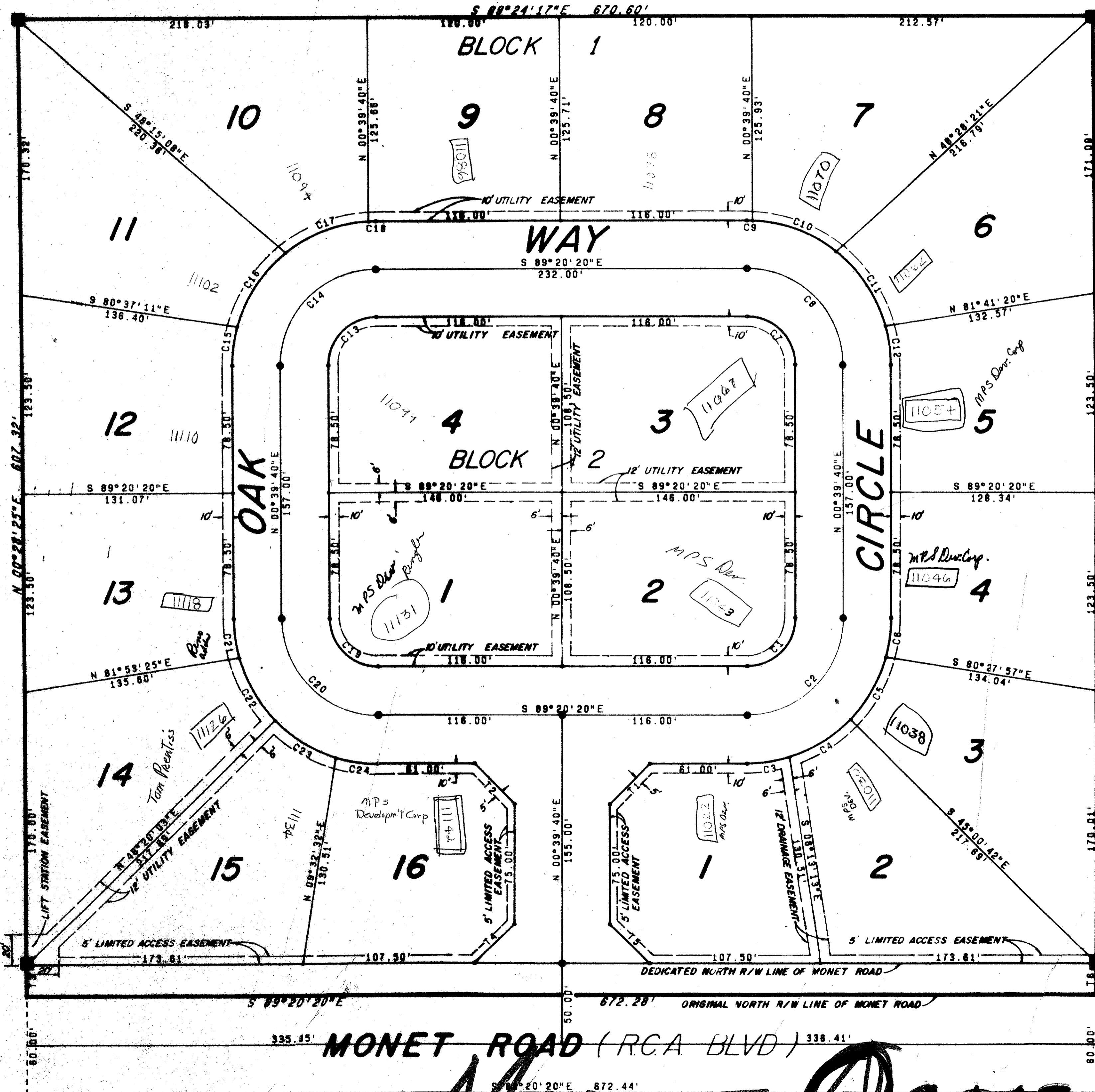
A SUBDIVISION OF THE SE 1/4 - SW 1/4 - SW 1/4 SECTION 5, TOWNSHIP 42 SOUTH, RANGE 43 EAST LESS THE RIGHT OF WAY OF MONET ROAD PALM BEACH COUNTY, FLORIDA



SHEET 2 OF 2 SHEETS MARCH 1977 BOARD OF COUNTY INSTRUCTION

162

NOTICE TO PURCHASER: LOTS SHALL BE CONNECTED TO A PUBLIC OR INVESTOR OWNED SEWAGE SYSTEM WITHIN 90 DAYS FROM THE DATE SUCH SYSTEM BECOMES AVAILABLE AT LOT OWNERS EXPENSE.



CURVE DATA						
C#	CHORD BEARINGS	CHORD DISTANCES	RADIUS	DELTA	ARC	TANGENT
1	N 45° 39' 40" E	42.43'	30.00'	90° 00' 00"	47.12'	30.00'
2	N 45° 39' 40" E	84.85'	60.00'	90° 00' 00"	94.25'	60.00'
3	N 82° 08' 55" E	26.64'	90.00'	17° 01' 30"	26.74'	13.47'
4	N 59° 18' 44" E	44.53'	90.00'	28° 38' 52"	45.00'	22.98'
5	N 30° 39' 52" E	44.53'	90.00'	28° 38' 52"	45.00'	22.98'
6	N 08° 30' 03" E	24.55'	90.00'	15° 40' 45"	24.63'	12.39'
7	S 44° 20' 20" E	42.43'	30.00'	90° 00' 00"	47.12'	30.00'
8	S 44° 20' 20" E	84.85'	60.00'	90° 00' 00"	94.25'	60.00'
9	S 88° 03' 55" E	4.00'	90.00'	02° 32' 50"	4.00'	2.00'
10	S 88° 50' 54" E	55.45'	90.00'	35° 53' 12"	56.37'	29.14'
11	S 32° 57' 41" E	55.45'	90.00'	35° 53' 13"	56.37'	29.14'
12	S 07° 10' 43" E	24.55'	90.00'	15° 40' 45"	24.63'	12.39'
13	N 45° 39' 40" E	42.43'	30.00'	90° 00' 00"	47.12'	30.00'
14	N 45° 39' 40" E	84.85'	60.00'	90° 00' 00"	94.25'	60.00'
15	N 08° 30' 02" E	24.55'	90.00'	15° 40' 45"	24.63'	12.39'
16	N 34° 17' 01" E	55.45'	90.00'	35° 53' 13"	56.37'	29.14'
17	N 70° 10' 14" E	55.45'	90.00'	35° 53' 12"	56.37'	29.14'
18	S 88° 23' 15" E	4.00'	90.00'	02° 32' 50"	4.00'	2.00'
19	S 44° 20' 20" E	42.43'	30.00'	90° 00' 00"	47.12'	30.00'
20	S 44° 20' 20" E	84.85'	60.00'	90° 00' 00"	94.25'	60.00'
21	S 07° 10' 42" E	24.55'	90.00'	15° 40' 45"	24.63'	12.39'
22	S 29° 20' 31" E	44.53'	90.00'	28° 38' 52"	45.00'	22.98'
23	S 57° 59' 23" E	44.53'	90.00'	28° 38' 52"	45.00'	22.98'
24	S 80° 49' 35" E	26.64'	90.00'	17° 01' 31"	26.74'	13.47'

SUBDIVISION OF SE 1/4 - SW 1/4 - SECTION 5, TWP 42S, RGE 43E. (PLAT BOOK 22, PAGE 42)

ANNEXED INTO PALM BEACH GARDENS ORD. 198888 19880421

C#	BEARINGS	DISTANCES
1	N 45° 39' 40" E	35.38'
2	S 44° 20' 20" E	35.38'
3	N 00° 28' 23" E	30.00'
4	N 45° 39' 40" E	35.38'
5	S 44° 20' 20" E	35.38'
6	N 00° 18' 5" E	20.00'

13

SURVEYORS NOTES
DENOTES P.R.M. (PERMANENT REFERENCE MONUMENT).
DENOTES P.C.P. (PERMANENT CONTROL POINT).
BEARING BASE: TAKEN FROM THE PLAT OF MONET ACRES (PLAT BOOK 25, PAGE 178) PALM BEACH COUNTY PUBLIC RECORDS.

5/42/43

32/

Lindahl & Browning, Inc.
Engineers - Planners - Surveyors
P.O. Box 727, Jupiter, Florida 33408

MONET OAKS

6 5
7 8